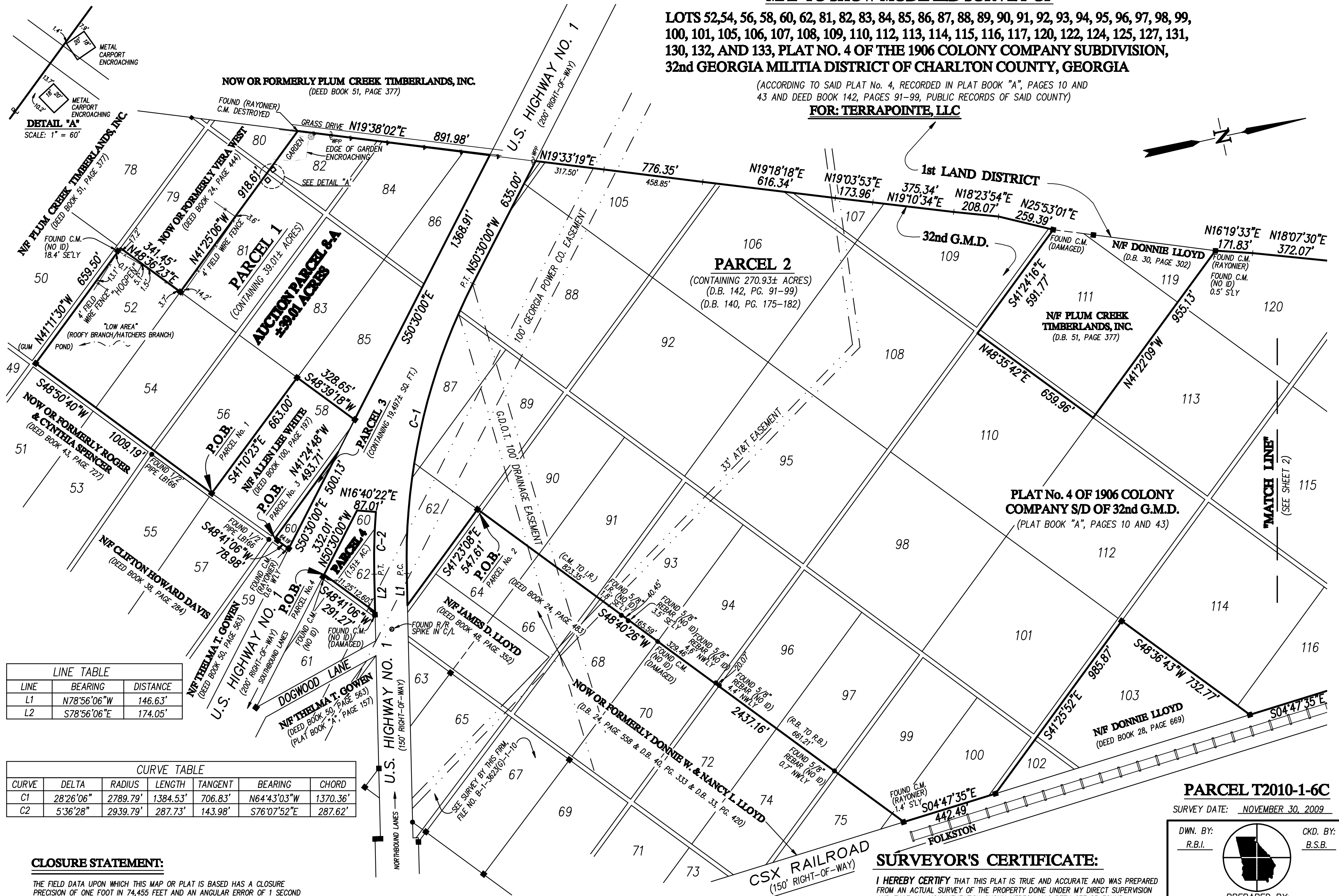


MAP TO SHOW MODIFIED SURVEY OF

LOTS 52,54, 56, 58, 60, 62, 81, 82, 83, 84, 85, 86, 87, 88, 89, 90, 91, 92, 93, 94, 95, 96, 97, 98, 99, 100, 101, 105, 106, 107, 108, 109, 110, 112, 113, 114, 115, 116, 117, 120, 122, 124, 125, 127, 131, 130, 132, AND 133, PLAT NO. 4 OF THE 1906 COLONY COMPANY SUBDIVISION, 32nd GEORGIA MILITIA DISTRICT OF CHARLTON COUNTY, GEORGIA

(ACCORDING TO SAID PLAT No. 4, RECORDED IN PLAT BOOK "A", PAGES 10 AND 43 AND DEED BOOK 142, PAGES 91-99, PUBLIC RECORDS OF SAID COUNTY)

FOR: TERRAPOINTE, LLC



DETAIL "A"
SCALE: 1" = 60'

LINE TABLE		
LINE	BEARING	DISTANCE
L1	N78°56'06"W	146.63'
L2	S78°56'06"E	174.05'

CURVE TABLE						
CURVE	DELTA	RADIUS	LENGTH	TANGENT	BEARING	CHORD
C1	28°26'06"	2789.79'	1384.53'	706.83'	N64°43'03"W	1370.36'
C2	5°36'28"	2939.79'	287.73'	143.98'	S76°07'52"E	287.62'

CLOSURE STATEMENT:

THE FIELD DATA UPON WHICH THIS MAP OR PLAT IS BASED HAS A CLOSURE PRECISION OF ONE FOOT IN 74,455 FEET AND AN ANGULAR ERROR OF 1 SECOND PER ANGLE POINT AND WAS ADJUSTED USING THE COMPASS RULE.

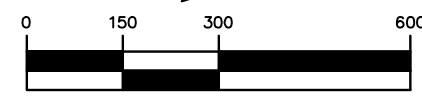
THIS MAP OR PLAT HAS BEEN CALCULATED FOR CLOSURE AND IS FOUND TO BE ACCURATE WITHIN ONE FOOT IN 773,661 (PARCEL 1), 2,197,506 (PARCEL 2), 119,202 (PARCEL 3), 232,596 (PARCEL 4) FEET.

EQUIPMENT USED FOR FIELD MEASUREMENTS:
LINEAR: TOPCON GPT-1003
ANGULAR: TOPCON GPT-1003

RECORDING DATA INFORMATION:

STATE OF GEORGIA, COUNTY OF CHARLTON:
OFFICE OF CLERK OF SUPERIOR COURT
THE WITHIN PLAT RECORDED IN PLAT
DRAWER _____ MAP No. _____
THIS _____ DAY OF _____, 2010

BY: _____
DEPUTY CLERK



SCALE: 1" = 300'

(SEE SHEET 2 FOR NOTES AND LEGEND)

SHEET 1 OF 2

CERTIFICATION: THIS IS TO CERTIFY TO THE CLERK OF SUPERIOR COURT OF CHARLTON COUNTY, GEORGIA, THAT TO THE BEST OF MY KNOWLEDGE AND BELIEF, THE PROVISIONS, RELATIVE TO THE ACT CREATED BY GEORGIA CODE SECTION 15-6-67 AMENDED (No. 1366-SENATE BILL No. 735), HAVE BEEN MET AND APPROVAL OF THIS PLAT BY THE APPROPRIATE LOCAL GOVERNING AUTHORITY IS NOT NECESSARY FOR RECORDING PURPOSES.

SURVEYOR'S CERTIFICATE:

I HEREBY CERTIFY THAT THIS PLAT IS TRUE AND ACCURATE AND WAS PREPARED FROM AN ACTUAL SURVEY OF THE PROPERTY DONE UNDER MY DIRECT SUPERVISION AND THAT ALL MONUMENTATION SHOWN HEREON HAS BEEN SET OR FOUND.

BY: **PRELIMINARY** DATE: _____
BEN BRANDON, JR.
GA. REGISTERED SURVEYOR No. 2053

PARCEL T2010-1-6C

SURVEY DATE: NOVEMBER 30, 2009

DWN. BY: R.B.I. CKD. BY: B.S.B.



PREPARED BY:
PRIVETT & ASSOCIATES, INC.
SURVEYORS & LAND PLANNERS
LICENSED SURVEY FIRM No. 166, GA.
LICENSED BUSINESS No. 4204, FL.
1201 SHADOWLAWN DRIVE
ST. MARYS, GEORGIA 31558
(912) 882-3738
DWG. No.: B-1-3623(1)-1-10